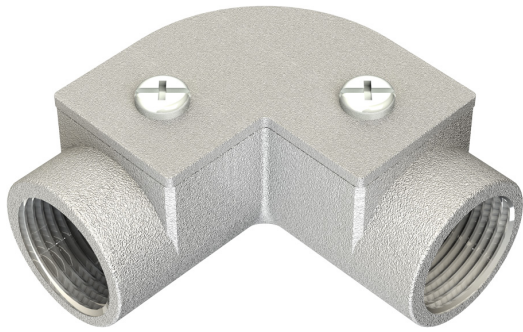


**PRODUCT CODE: IE1G**  
CONDUIT INSPECTION ELBOW



**DESCRIPTION**

20mm Conduit Inspection Elbow

**FINISH**

Hot Dipped Galvanised

**MATERIAL**

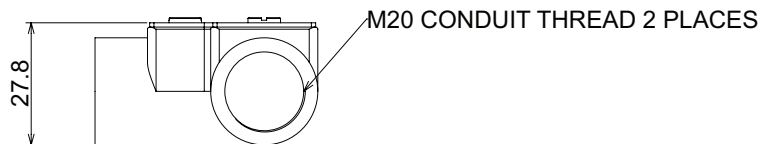
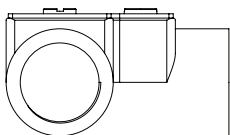
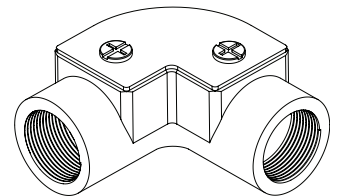
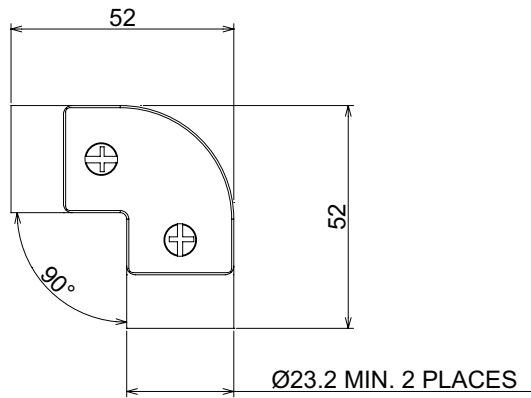
Body: Malleable Iron / Cover: Steel

**PACKAGING**

Packed in qty 10

**ADDITIONAL NOTES**

Conforms to BS EN61386-1  
Compliant to LU Standard 1-085 (for use on surface & sub-surface locations)  
Supplied complete with qty 2 M4 x 6mm pozi-pan screws



Values are nominal and with a general tolerance  $\pm 5\%$  unless otherwise specified